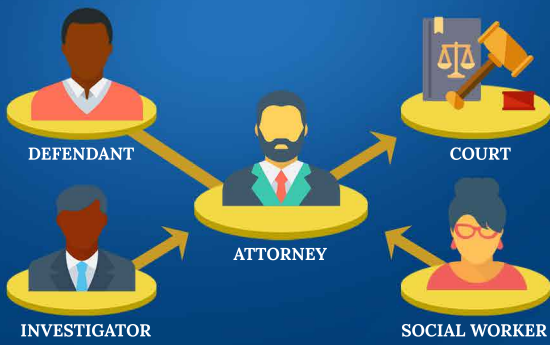
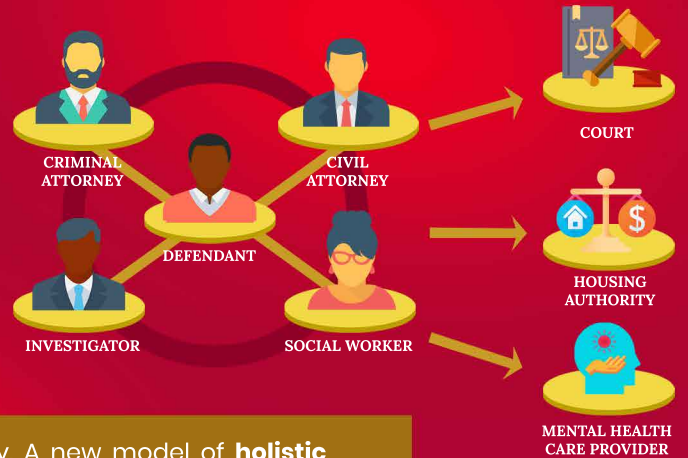


THE EFFECTS OF HOLISTIC DEFENSE ON CRIMINAL JUSTICE OUTCOMES

TRADITIONAL INDIGENT DEFENSE MODEL



HOLISTIC DEFENSE MODEL



Traditionally, public defenders focus on criminal case advocacy. A new model of **holistic public defense** seeks to resolve cases more effectively and reduce recidivism by also addressing underlying challenges and needs that may lead to criminal activity. It provides an **interdisciplinary service** that includes a criminal defense lawyer and advocates such as social workers, housing advocates, investigators, and civil attorneys.

KEY TAKEAWAYS

First large-scale evaluation of impacts of holistic representation on conviction, sentencing, and recidivism.

WHY STUDY THE BRONX?



- Holistic defense exists side-by-side with traditional defense
- Counsel assignment based on rotating court shift, creating a natural experiment
- Detailed administrative data covering 590,000 cases from 2000-07 and 2012-14 involving diverse set of crimes and defendants

Holistic defense reduces the **likelihood of a custodial sentence** by **16%** and **expected sentence length** by **24%**, **without increasing future crime.**



Over study period, holistic defense averted days of custodial punishment

1.1 Million

3,200

fewer people incarcerated each year if all NYC defendants had comparable holistic defense

IS THIS A BIG DEAL?

Taxpayer savings
\$165 million

VS.

Holistic defender costs
\$95 million

BOTTOM LINE

Strengthening indigent defense can help address mass incarceration without compromising public safety